

IA-5 Identification of Factors Affecting the Performance and Sustainability of Waste Banks in Urban Areas: Case Study of East Jakarta and Bekasi Municipality, Indonesia

*Ruth Isabella Simamora¹⁾²⁾, Sri Maryati²⁾, Sebastian Dente¹⁾, Seiji Hashimoto¹⁾ 1) Ritsumeikan University 2) Institut Teknologi Bandung

OBJECTIVES

Finding and clarifying the factors that affecting the performance of waste bank.

Analysis of which factor that **most affecting** the performance of waste bank in urban area.

Evaluation of performance of waste bank.

METHOD

Synthesis Factor, Indicator, and Parameter

Weighting (AHP) and Scoring (Linear Equation)

Evaluating the performance of waste bank

CONCLUSION

Six factors that affecting the performance of waste bank in urban area.

Environmental factor has the highest weight coefficient. In the second position is **social factor**. Institution become the least factor that affect the performance of waste bank. Most of waste banks have poor performance in terms of **technical factors**.

RESULTS 1-2

Table 1: Identified factors and indicators

Factor	Indicator
Environmental (ENV)	(ENV1) Level of public health
	(ENV2) Level of waste reduction in temporary disposal and landfill
	(ENV3) Urban carrying capacity
Social (SIC)	(SOC1) Pattern of member and worker's social background
	(SOC2) Level of community participation
	(SOC3) Level of habitual change in sorting waste
Technical (TEC)	(TEC1) Availability of facilities or equipment
	(TEC2) The technical design of facilities or equipment
Financial (FIN)	(FIN1) Balance between expenditure and income
	(FIN2) Scheme and funding sources
Regulatory and Legal (REG)	(REG1) The existence of law, policies, and technical regulation in multiple level
	(REG2) Level of understanding regarding the regulations, policies, and laws related to waste bank management in multiple level
Institutional (INS)	(INS1) Effectiveness of distribution of function and responsibilities regarding organizational structures
	(INS2) Assessment of values, norms, cultures, and political aspects that affect the organizational structures

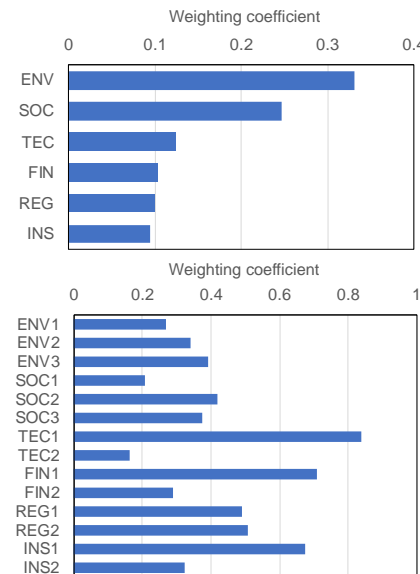
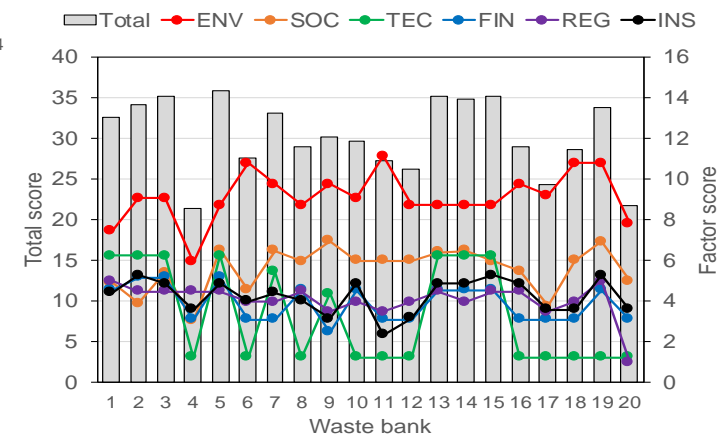


Figure 1 : Weighting coefficients of factors and indicators

RESULTS 3



DISCUSSION

1. Are there specific factors that can affect the performance of waste bank in urban area?
2. Which factors that giving most influences for sustainability of waste bank program?
3. What is the current condition of the performance of the waste bank in urban area?